



GrilleGuy.com, LLC

2004-2005 Mazda RX-8 Grille Install Instructions

Table of contents

- A. Front bumper removal**
- B. Lower Side Vent Grille Install**
- C. Lower Center Grille Install**
- D. Main Grille Install**
- E. Front bumper Install**
- F. Side Vent modifications for fog lights**

GrilleGuy.com, LLC is not responsible for vehicle damage caused in the removal or installation of our products. These instructions are to be used as a reference only. Final decisions are the responsibility of the installer. Deviations are to be made at the installer's own discretion. Please read instructions **completely** before proceeding with installation, most importantly section F!!!

Thanks again for purchasing your custom grille insert from the GrilleGuy. The following are some general guidelines that will simplify the installation process and make owning your GrilleGuy grille an enjoyable experience.

- ? Always place the head of the cable ties behind the grille for a cleaner more custom look.
- ? Occasional use of an aluminum polish will give your grille a brilliant shine

Hardware list:

Mazda RX-8 Grille 04 05, Combo U&L&V

- 4 perforated aluminum grilles (one is an insert, 3 fit behind)
- 1 rubberized trim gasket for main upper center grille
- 2 trim gaskets for side vents (only used when modifying for fog lights)
- 22 weather resistant nylon zip ties

Mazda RX-8 Grille 04 05 SideVent/Lower Grill Combo

- 3 perforated aluminum grilles (all 3 fit behind)
- 16 weather resistant nylon zip ties
- 2 trim gaskets for side vents (only used when modifying for fog lights)

Mazda RX-8 Grille 04 05, UPPER CENTER

- 1 perforated aluminum grille insert
- 1 rubberized trim gasket for main upper center grille
- 6 weather resistant nylon zip ties

Mazda RX-8 Grille 04 05, SIDE VENTS

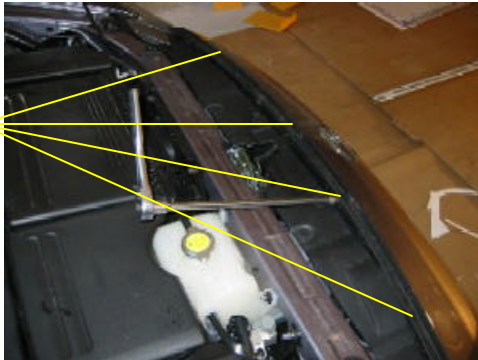
- 2 perforated aluminum grilles (both fit behind)
- 8 weather resistant nylon zip ties
- 2 trim gaskets for side vents (only used when modifying for fog lights)

Mazda RX-8 Grille, 04 05, LOWER CENTER

- 1 perforated aluminum grille (fits behind)
- 8 weather resistant nylon zip ties



A. Front bumper removal.



Tools Req'd: ratchet with 8mm and 10mm sockets (extension not required), small flat blade screwdriver, small phillips head screwdriver.

Open the hood and prop it up. Remove the four 10mm bolts (see photo)

Remove the quick-lock fasteners holding the weather trim piece in place. They are removed using a small Phillips screwdriver.



Remove the 4 quick-lock fasteners in the passenger fender wheel (see photo). Using a Phillips head screwdriver, to back the center out (you may need to hold the outer ring to prevent it from turning) then pull the center out and then the outer ring. Repeat this for the driver's side as well.

Pull back the underpinning in the fender wells to locate the 8mm fastener that holds the side markers (orange lenses). Once the fastener is removed, a tab (see sub photo) must be released by pressing it down while pulling the side marker outward. The side marker is then slid to the rear to fully remove.





GrilleGuy.com, LLC



Looking under the front end of the car you will find ten 8mm screws that hold the front bumper to the underpinning (see photo).

At this point the front bumper cover is held in place merely by a locating pin that is beneath the trim at the top. Pull the bumper cover away from the fender on both sides at the side markers then proceed to lift the bumper cover upward and forward. At this point if you have fog lamps you will need to remove the wiring connectors. Place the front bumper cover on a padded surface to prevent scratching. You should now have something like this (minus the snazzy new grille).





GrilleGuy.com, LLC

B. Lower Side Vent Grille Install

Once the front bumper cover is on a stable yet padded surface proceed to remove the plastic boxes located on the backside of the cover in the fog vents. They are removed with a Phillips head screwdriver. Once 2 of the screws are removed on the passenger side it will hinge to reveal access to additional screws. You will use these screws to mount the grille so do not discard them. ***You need 2 additional screws similar to these to "rigidly" affix both fog vent grilles. These are your responsibility, please acquire them before you start!*** Caution a screw that is too big could deform the plastic surrounding the screw point.



The photo shows the passenger side grille mounted in place. The upper 2 screws go thru the grille material. You will have to align one of the screws and then flex the material so that it follows the contour of the front bumper. Note it will **NOT** be totally flush on the top surface of the fog vent as there is a screw hole that extends up into the way. This will not be

noticeable unless you lie under the car and look up at the grille. Flex the grille enough so that a second hole lines up with the far right screw hole. Do not tighten these screws at this time, merely start them. If you purchased the RAZR material you will have to cut a small notch in the material to get the screw to fit.



Using 2 zip ties attach the lower portion of this grille. It is accomplished by making a small loop around the screw with 1 zip tie and using the other zip tie to go thru the grille material. Repeat for the drivers side. Note the position of the chamfer will indicate the driver's side from the passenger's side grille.



GrilleGuy.com, LLC

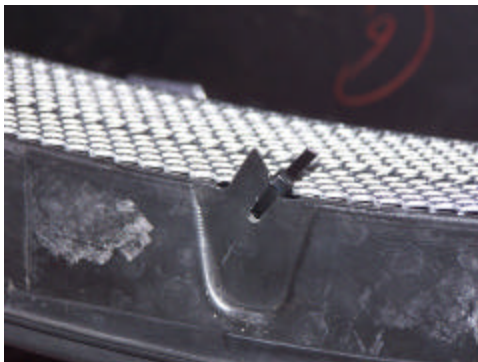
C. Lower Center Grille Install



You will need 2 additional screws similar to the ones used for the fog vent grilles to attach this grille.

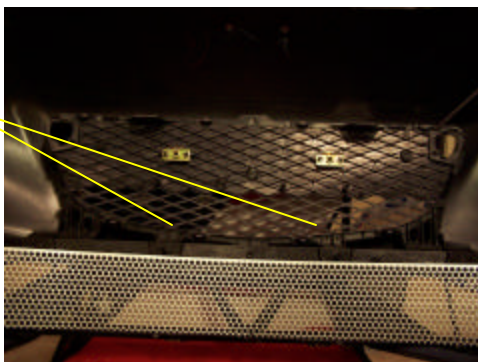
Tools Req'd: Drill motor, 5/32 (or very close drill bit), and Phillips head screwdriver.

Center the lower center grille on the front bumper cover. Using one of screws go through a hole in the grille to attach using a screw mounting hole found in the front bumper cover. The grille then can be contoured to the bumper cover and a 2nd screw inserted through a grille hole and into a screw mounting hole. The bottom of the grille should be resting against the small tabs at the bottom side a small gap is allowable as this point as it will closed later in the install.



Drill a hole from the bottom in the center of the car. **NOTE:** This hole should come thru behind the "RENEISIS" emblem and will NOT be visible from the front. Check and double check before you drill! Use a zip tie to secure the bottom of the grille to the lower portion of the bumper cover.

Optionally you can drill 2 more holes at the far left and far right beside of a screw that holds the two pieces of the front cover together. Placing zip ties through those holes will secure the lower edges to the bumper cover.

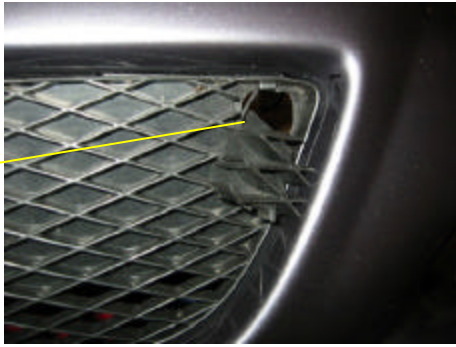


Remove two of the quick-lok fasteners (see photo) center post only and place in a safe place. Route a zip tie through the grille and then through the quick-lok. This will secure the upper portion of the grille. Clip the zip tie extensions for a clean install.



GrilleGuy.com, LLC

D. Main Grille Install



Remove the corner pieces of the main grille by pushing them from the back side and then squeezing the two "tang" of the retaining cord to allow them to be removed. Place these in a safe place; they will no longer be required.



Route a zip tie from the back over top of the OEM grille and then through a hole in the grille and back through an adjacent hole and then through the large opening left from where the piece was removed previously. Do not tighten at this time. You will want to check the fit before snugging up these ties. ***DO NOT over tighten at any point or it could damage the grille!***



The bottom is attached via a single zip tie located as close to the trim as possible and in the center. Clip all zip tie extensions for a clean install.





GrilleGuy.com, LLC

E. Front Bumper Cover Install

Refer to section A for photos. Begin by placing the bumper cover up to the vehicle and aligning the pin in the center (alignment pin) to the cover. Careful not to let the sides bang into the front fenders. Once it is in place, you may have to apply some abrupt pressure around the headlamps to get the cover to seat. At this point, it is just the replacing all of the screws and fasteners. But here is our recommended sequence.

- Side Markers - put the lamps in the lenses
 slide the side markers into place
 attach the side markers with the 8mm screws
 repeat for other side

- Fender wells - replace the 4 quick-lok fasteners
 repeat for other side

- Under pinning - replace the 8mm screws

- Weather-strip - replace the trim
 Attach with 4 10mm screws and some small quik-lok
 fasteners



GrilleGuy.com, LLC

G. Side vent Adaptation for Fog Lights

If your RX-8 came equipped with fog lights you will want to follow these recommendations to modify the grille to accommodate the fogs. The RX-8 we used for development did not have the fog lights, so we can not give you specific instructions but we can share some proven techniques to help get the job done. This is your chance to apply your engineering skills.

Before removing the bumper, get your self some cardboard or poster board which works even better. Trim a piece so that it fits into the opening for the fog lights and takes the contour of the fog lamps. The photo below kind of gives you an idea of what you are trying to do.



Of course, you want to do a better job with the real thing than I did with the software. Poster board is cheap and easy to cut, so if you have to make several iterations to get a better fit it will be worth it when it comes time to cut the material.

Proceed with the installation and mount the side vents as if you had no fog lights. Place the poster board template over the side vent grille as it is installed on your bumper. Use a permanent marker to trace over the area where the fog light would be. Now remove the grille and trim away the area you just marked off. The aluminum is soft and can easily be cut with some aviation or tin snips and diagonal cutters will do in a pinch. We don't recommend trying to cut a hole in the material; this is difficult, just cut away the area where the fog would be so that when you are done you will two halves. The edges may be rough but we have included two small pieces of trim to cover the edge if you choose. Proceed with the installation & Good Luck.